

Barrow Apple

Collector Shape Name: Barrow Apple

Circa: 1850s

Shape Characteristics

Body

Broad Flat Leaf

Finial

Apple Finial

Handle

Decorative Tab Handle



[Enlarge Image](#)

Associated Images



Potters Who Made This Shape

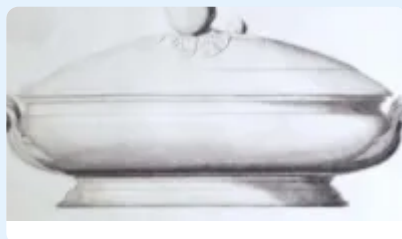


Barrow & Co.

Kew Drawings | Barrow & Co.

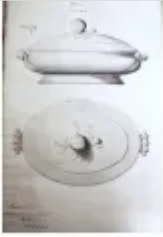


**Vegetable Tureen Base
and Lid**



**Vegetable Tureen Base
and Lid**

Kew Registrations



- Patent Registration # 52859 Date: October 10, 1853
- Cover dish Barron & Co Earthenware manufacturers
Fenton Staffordshire
- Apple shape vegetable tureen

Oct 10, 1853

Q preview