

Boote 1851 | Red-Cliff Co. | Teapot or Coffee Pot Base and Lid | Mark | 003

Shape Name

[Boote 1851](#)

Potter Name

[Red-Cliff Co.](#)

Photo Type

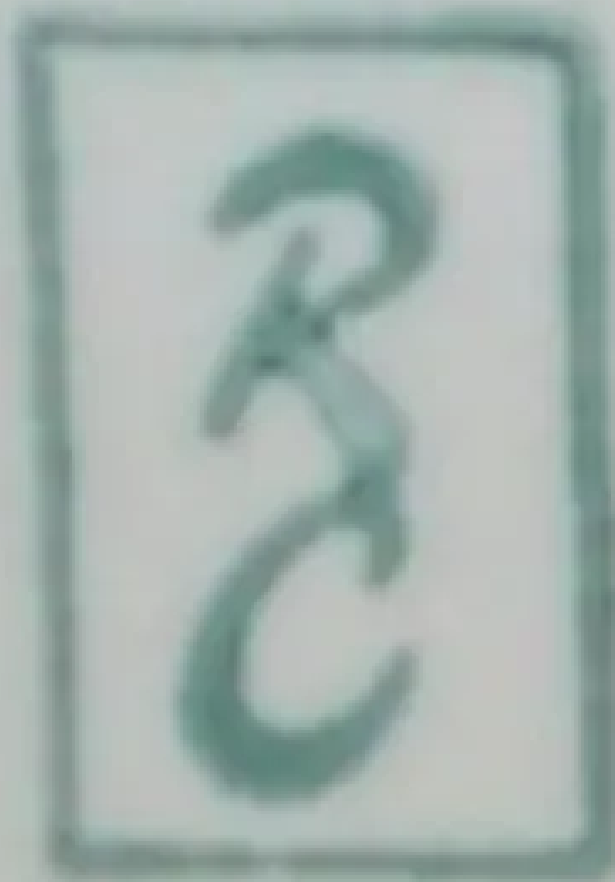
Mark - Photo

Item

Teapot or Coffee Pot Base and Lid

Parent Image

[Boote 1851 | Red-Cliff Co. | Teapot or Coffee Pot Base and Lid | Item | 002](#)



RED-CLIFF
IRONSTONE
MADE IN U.S.A.

[Enlarge Image](#)