

Edward Pearson

POTTERY LOCATIONS

Liverpool Road

Start Year

1850

End Year

1853

Country

England

Abbey Pottery, Sneyd Street

Start Year

1853

End Year

1868

Country

England



IRONSTONE CHINA
EDWARD PEARSON

[Enlarge Image](#)

POTTER TRANSITIONS

Subsequent Potter Name: Henry Meakin
Years: From 1873 to 1876

Related Shapes



Ceres



Ceres Shape



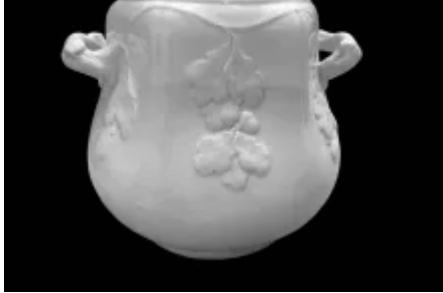
Dangling Tulip



Gothic



Mississippi Shape



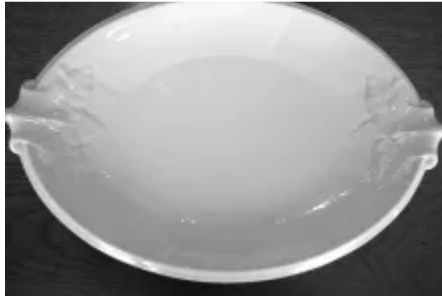
Oak and Acorn



Pea Pod with Vine



Pearson's #5 Shape



Pearson's #6 Shape



Unknown Tableware



Wheat and Hops